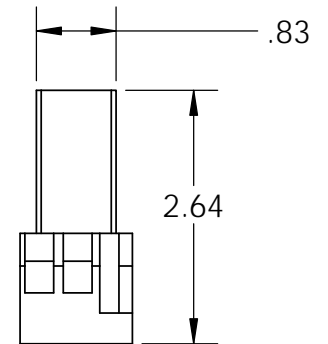
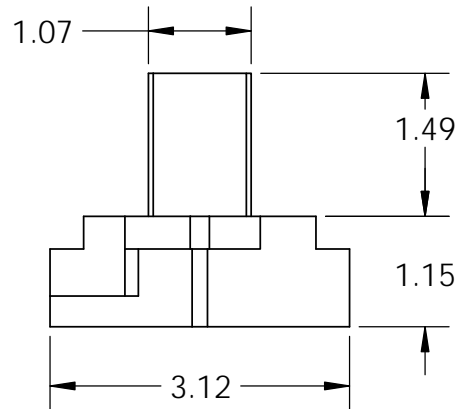
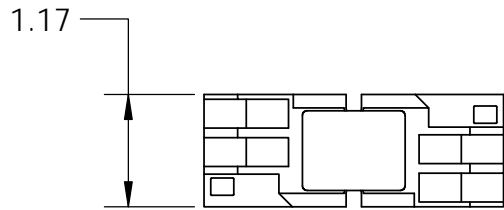
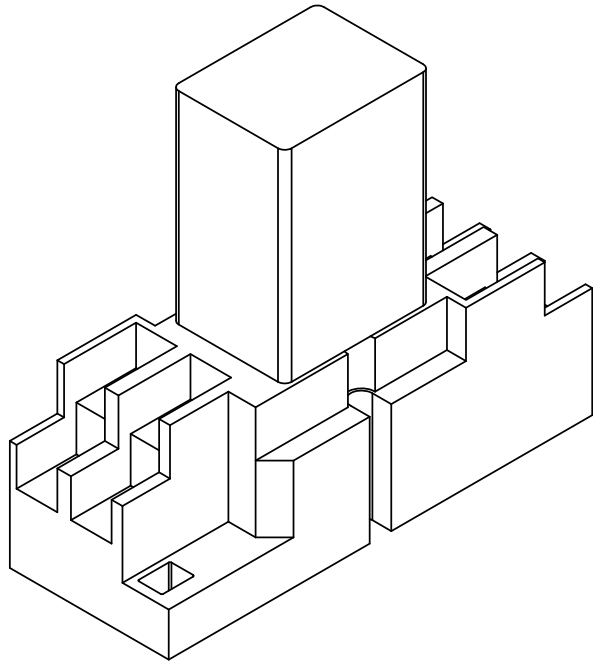
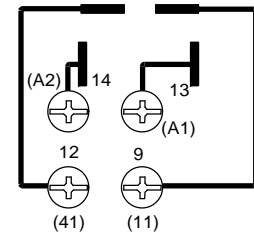
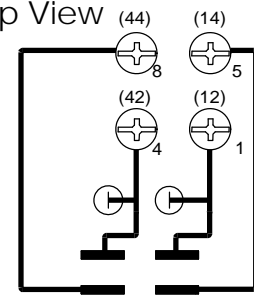


WPRLY



Wiring: Top View



- High open contact dielectric strength (up to 2500V rms)
- Flag indicator shows relay status in manual or powered condition
- A pushbutton allows manual operation of the relay without the need for power to the coil
- Lock-Down door, when activated, holds pushbutton and contacts in the "operate" position, allowing circuits to be analyzed
- UL certified
- 12VDC coil input voltage
- Rated at 10 A

**UNCONTROLLED DRAWING**

THIS PRINT IS THE PROPERTY OF DYNAQUIP CONTROLS AND SHALL NOT BE COPIED, REPRODUCED, LOANED, OR DISPOSED OF DIRECTLY OR INDIRECTLY, NOR USED FOR ANY PURPOSE OTHER THAN THAT FOR WHICH IT IS SPECIFICALLY FURNISHED EXCEPT BY WRITTEN PERMISSION OF DYNAQUIP CONTROLS.

NO.		WPRLY		FILE NO.	DO NOT
				Sub. 334	SCALE
TITLE					
WaterCop Relay Kit					
DR	DATE	CH'KD	DATE	ENGR	DATE
MWS	06-10-15	MWS	06-10-15	MWS	06-10-15

